



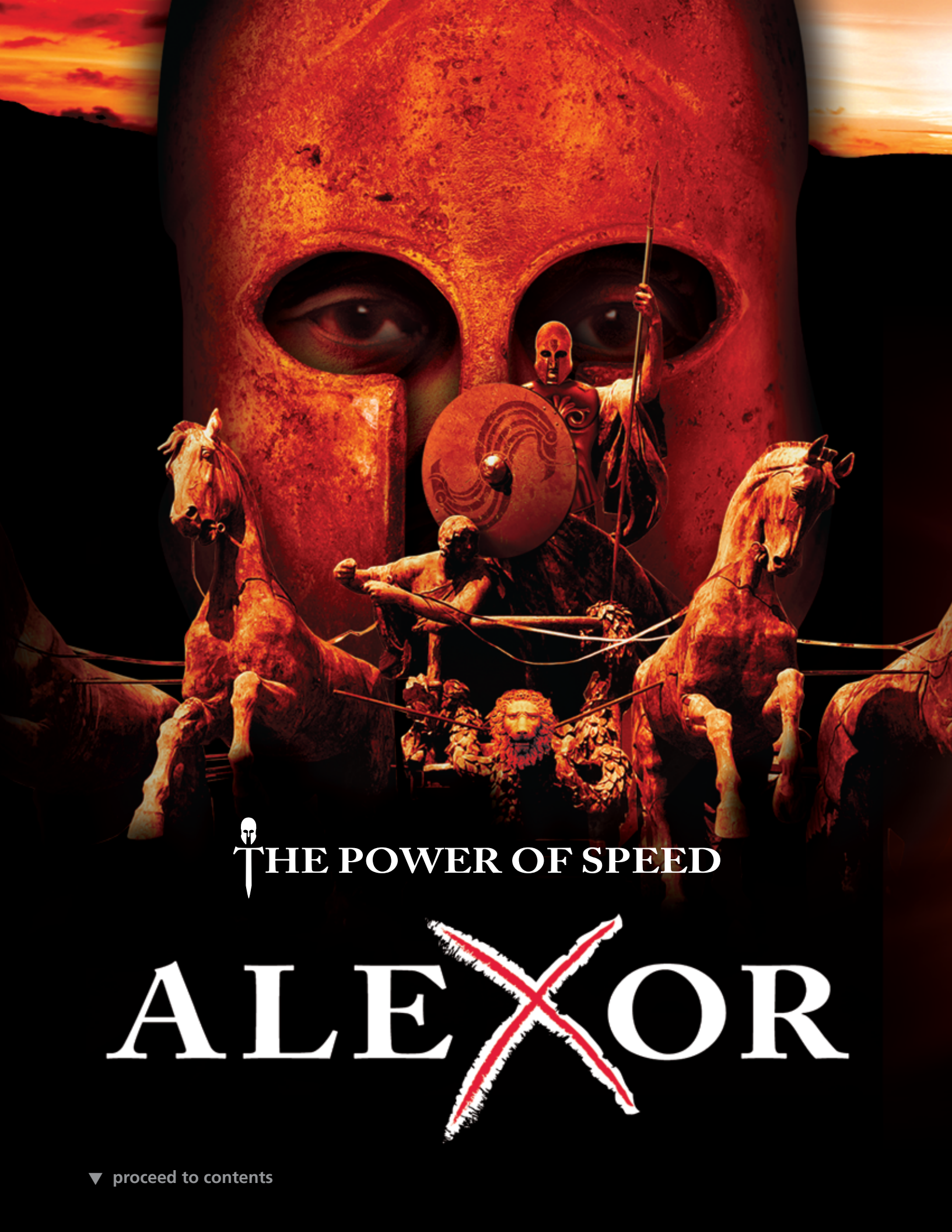
Works when it matters most.



NORTH AMERICAN EDITION

CATALOG 2009/10

▼ [proceed to contents](#)



 THE POWER OF SPEED

ALEXOR

▼ [proceed to contents](#)

Introducing Alexor, the Great Protector.

The 2-Way Wireless Panel and "virtual" brain of DSC's 2-Way Wireless Security Suite, Alexor provides fully supervised wireless communication to DSC's 2-Way and 1-Way 433 MHz wireless peripherals -- keypads, sirens, detectors and wireless keys, as well as GSM and IP communications.

Keypads

2-Way Wireless
Wire-Free Keypad
WT5500
(Page 1)



Wireless Keys

2-Way Wireless Key
WT4989
(Page 25)



Communicators

Internet and GSM/
GRPS Dual-Path Alarm
Communicator
TL265GS
(Page 40)



GSM/GPRS Wireless
Alarm Communicator
GS2065
(Page 40)



Sirens

2-Way Wireless
Indoor Siren
WT4901
(Page 28)



2-Way Wireless
Outdoor Siren
WT4911
(Page 28)



Detectors

Wireless
CO Detector
WS4913
(Page 27)



Wireless
Flood Detector
WS4985
(Page 28)





CATALOG 2009/10



Click on a link
to access it's
section



 NORTH AMERICAN EDITION

CONTENTS

PANELS, KEYPADS & MODULES

- 1** Wireless
- 2-9** PowerSeries
- 10** Audio Verification
- 11** Integration
- 12-16** MAXSYS®
- 19-24** Structured Cabling

SENSORS & ACCESSORIES

- 25-29** Wireless
- 30-31** Addressable
- 32-36** Motion Detectors
- 37-38** Glassbreak Detectors
- 39** Smoke Detectors

COMMUNICATIONS

- 40-42** Transmitters
- 43-44** Sur-Gard®

MISCELLANEOUS

- 17-18** Software Solutions
- 45** Services & Support



Compatibility

DSC products are designed to work with existing or future products.

Durability

DSC products are designed to work, last and withstand extreme situations.

Upgradeable

DSC products allow you to expand and enhance systems with no replacement necessary.

Reliability

DSC products go beyond industry-required testing to ensure reliability and product life.

Flexibility

DSC products allow you to build a system that works for you with over 1000 configurable items.

Quality

DSC is committed to Six Sigma's utilization of consistent and predictable processes to improve what the customer sees and feels.



Wireless

ALEXOR 2-Way Wireless Panel PC9155

- 32 wireless zones, 16 wireless keys (without using a zone slot)
- Wireless quick enroll
- Template programming
- 16 user codes, 1 master code and 1 maintenance code
- Account code error checking (patent pending)
- Alternate communications via GSM/GPRS and IP
- Onboard siren at 85dB
- 2 Input/Output terminals
- 200mA Aux Output
- 500 event buffer
- Wall and case tamper
- 24Hr Battery backup

Approval Listings: FCC/IC, UL/ULC, SIA CP-01, CSFM



2-Way Wireless Wire-Free Keypad WT5500

- 2x16 full message display
- Intuitive clock programming
- Multiple door chime
- Ambient light sensor
- Display and keymat backlighting
- Outdoor temperature display
- Wall and Deskstand* mount
- † Proximity Arm/Disarm (WT5500P Only)
- Installer's programming
- Multi-Language support
- 5 programmable function keys
- 3 one-touch emergency keys
- Tamper switch
- Nominal battery life - 3 years
- Compatible with Alexor

*WT5500D or WT5500DMK

Approval Listings: FCC/IC, UL/ULC, SIA CP-01, CSFM



Self-Contained Wireless Alarm System PowerSeries 9047

- Smallest footprint of any self-contained wireless alarm system currently available
- Aesthetically pleasing design
- Built-in 2-way audio VOX and push-to-talk alarm communication
- Supports 32 wireless zones and 16 wireless keys (without using a zone slot)
- Full 32-character programmable phrases
- Enlarged keypad buttons
- 5 programmable function keys
- Intuitive clock programming
- Input/Output terminals can be programmed to operate as zone inputs or programmable outputs
- Individual FAP keys
- Wireless quick enroll
- 2 PGM outputs
- Template programming
- 17 user codes
- 128 event buffer
- 1 partition

Approval Listings: FCC/IC, UL/ULC, SIA CP-01, CSFM



PowerSeries

PowerSeries Control Panel PC1616

- 6 on-board zones
- Expandable to 16 hardwired zones
- Expandable to 32 wireless zones
- 2 PGM outputs: expandable to 14 (PC5204, PC5208)
- Template programming
- Connect up to 8 supervised keypads with keypad zones
- 2 partitions
- 500-event buffer
- 48 user codes
- CP-01 compliant

Approval Listings: FCC/IC, UL/ULC, SIA CP-01, CSFM



PowerSeries Control Panel PC1832

- 8 on-board zones
- Expandable to 32 hardwired zones
- Expandable to 32 wireless zones
- 2 PGM outputs: expandable to 14 (PC5204, PC5208)
- Template programming
- Connect up to 8 supervised keypads with keypad zones
- 4 partitions
- 500-event buffer
- 72 user codes
- CP-01 compliant

Approval Listings: FCC/IC, UL/ULC, SIA CP-01, CSFM



PowerSeries Control Panel PC1864

- 8 on-board zones
- Expandable to 64 hardwired zones
- Expandable to 32 wireless zones
- 4 PGM outputs: expandable to 14 (PC5204, PC5208)
- Template programming
- Connect up to 8 supervised keypads with keypad zones
- 8 partitions
- 500-event buffer
- 95 user codes
- CP-01 compliant

Approval Listings: FCC/IC, UL/ULC, SIA CP-01, CSFM





PowerSeries Control Panel Overview

Feature Comparison Chart

Features	PC1616	PC1832	PC1864
Number Of On-Board Zones	6	8	8
Total Zones Supported	32	32	64
Keypad Zone Expansion	Yes	Yes	Yes
Hardwired Zone Expansion	Yes	Yes	Yes
Hardwired Zones	16 (1 x PC5108)	32 (3 x PC5108)	64 (7 x PC5108)
Wireless Zone Expansion	Yes	Yes	Yes (32 Wireless)
Addressable Zone Expansion	Yes	Yes	Yes (32 Addressable)
Number of Keypads	8	8	8
Number of Wireless Receivers	4	4	4
On-Board PGM Outputs	PGM 1 = 50 mA PGM 2 = 300mA	PGM 1 = 50 mA PGM 2 = 300mA	PGM 1, 3, 4 = 50 mA PGM 2 = 300mA
Number of Main Panel Low-Current PGM Outputs	1	1	3
Number of Main Panel High-Current PGM Outputs	1	1	1
PGM Expansion	8 x 50 mA (PC5208) 4 x 500 mA (PC5204)	8 x 50 mA (PC5208) 4 x 500 mA (PC5204)	8 x 50 mA (PC5208) 4 x 500 mA (PC5204)
Number of Additional Low-Current PGM Outputs	8	8	8
Number of Additional High-Current PGM Outputs	4	4	4
Number of Access Codes	47+ Master Code	71+ Master Code	94+ Master Code
Number of Partitions	2	4	8
Panel Event Buffer	500	500	500
Phone Line Supervision	Yes	Yes	Yes
Siren Supervision	Yes	Yes	Yes
Bell Output	12 V / 700 mA (cont)	12 V / 700 mA (cont)	12 V / 700 mA (cont)
SIA CP-01 Compliant	Yes	Yes	Yes
Event-Initiated Personal Paging	Yes	Yes	Yes
Upload/Download Support	Yes	Yes	Yes
Direct-Connect (PC Link) Downloading Support	Yes	Yes	Yes
DLS2002SA End-User Downloading Support	Yes	Yes	Yes
Internet Alarm Communications	Yes	Yes	Yes
Audio Alarm Verification	Yes	Yes	Yes
GSM Alarm Communications	Yes	Yes	Yes
Battery Required	4 Ah / 7 Ah / 14 Ah	4 Ah / 7 Ah / 14 Ah	4 Ah / 7 Ah / 14 Ah

PowerSeries 64-Zone LCD Full-Message Keypad PK5500 RFK5500 with built-in wireless receiver

- 8 language support
- Global partition status
- Full 32-character programmable phrases
- Modern, slim-line landscape keypad
- Enlarged keypad buttons
- 5 programmable function keys
- Intuitive clock programming*
- Input/Output terminal can be programmed to operate as a zone input, programmable output or as a low temperature sensor
- 3 one-touch emergency keys
- Multiple door chime per zone
- Adjustable backlight and keypad buzzer
- Wire channel
- Dual wall-mount and front cover tamper
- Easy-to-install mounting hinge
- Surface or single-gang box mount
- New AC status ICON
- Available with English function keys
- RFK5500 includes all of the same features and supports 32 wireless zones and 16 wireless keys

* Feature only available with new PowerSeries control panels (PC1616, PC1832 and PC1864)

Approval Listings: FCC/IC, UL/ULC, SIA CP-01, CSFM



PowerSeries 64-Zone LCD Picture Icon Keypad PK5501 RFK5501 with built-in wireless receiver

- Modern, slim-line landscape keypad
- Enlarged keypad buttons
- 5 programmable function keys
- Input/Output terminal can be programmed to operate as a zone input, programmable output or as a low temperature sensor
- 3 one-touch emergency keys
- Multiple door chime per zone
- Adjustable backlight and keypad buzzer
- Wire channel
- Dual wall-mount and front cover tamper
- Easy-to-install mounting hinge
- Surface or single-gang box mount
- New AC status ICON
- Available with English function keys
- RFK5501 includes all of the same features and supports 32 wireless zones and 16 wireless keys

Approval Listings: FCC/IC, UL/ULC, SIA CP-01



PowerSeries 16-Zone LED Keypad PK5516 RFK5516 with built-in wireless receiver

- Modern, slim-line landscape keypad
- Enlarged keypad buttons
- 5 programmable function keys
- Input/Output terminal can be programmed to operate as a zone input, programmable output or as a low temperature sensor
- 3 one-touch emergency keys
- Multiple door chime per zone
- Adjustable backlight and keypad buzzer
- Wire channel
- Dual wall-mount and front cover tamper
- Easy-to-install mounting hinge
- Surface or single-gang box mount
- New AC status ICON
- RFK5516 includes all of the same features and supports 32 wireless zones and 16 wireless keys

Approval Listings: FCC/IC, UL/ULC, SIA CP-01



PowerSeries 8-Zone LED Keypad PK5508 RFK5508 with built-in wireless receiver

- Modern, slim-line landscape keypad
- Enlarged keypad buttons
- 5 programmable function keys
- Input/Output terminal can be programmed to operate as a zone input, programmable output or as a low temperature sensor
- 3 one-touch emergency keys
- Multiple door chime per zone
- Adjustable backlight and keypad buzzer
- Wire channel
- Dual wall-mount and front cover tamper
- Easy-to-install mounting hinge
- Surface or single-gang box mount
- New AC status ICON
- RFK5508 includes all of the same features and supports 32 wireless zones and 16 wireless keys

Approval Listings: FCC/IC, UL/ULC, SIA CP-01



PowerSeries 8-Zone LED Keypad LED5511Z

- Modern, slim-line portrait keypad
- Large, backlit buttons on keypad for trouble-free viewing and activation
- 4 programmable function keys
- Dual FAP keys
- Dual tamper support
- Zone input
- Surface or single-gang box mount
- Wire channel

Approval Listings: FCC/IC, UL/ULC



PowerSeries 64-Zone Icon LCD Keypad LCD5511

- Modern, slim-line portrait keypad
- Large, backlit buttons on keypad for trouble-free viewing and activation
- Intuitive symbols and backlit display
- Input/Output terminal can be programmed to operate as a zone input, programmable output or as a low temperature sensor
- 4 programmable function keys
- 8 partition support
- Dual FAP keys
- Wire channel
- New AC status ICON

Approval Listings: FCC/IC, UL/ULC



PowerSeries Color Touchscreen Security Interface PK5590CL

- Aesthetically pleasing, modern design
- High-contrast, color touchscreen QVGA display
- 3 one-touch emergency keys
- Intuitive LED indication of security system status
- User help screens
- Available in English and French

Approval Listings: FCC/IC



PowerSeries 8-Zone LED Keypad PC1555RKZ

- LED status lights for zones and status functions
- Zone input

Approval Listings: FCC/IC, UL/ULC



PowerSeries

Keypad Overview

PowerSeries Keypad Features

General Features	PK5500*	PK5501*	PK5516*	PK5508*
Display Type	LCD/ALPHA	LCD/FIXED	LED	LED
Zone Support	64	64	16	8
Partition Support	8	8	8	8
Number of Function Keys	5	5	5	5
Dedicated Function Keys	Yes	Yes	Yes	Yes
Dedicated FAP Keys	Yes	Yes	Yes	Yes
Dual FAP Keys	No	No	No	No
Key Size	Large	Large	Large	Large
AC Status LED	Yes	Yes	Yes	Yes
Integrated Low Temperature Sensor	Yes	Yes	Yes	Yes
Zone Input	Yes	Yes	Yes	Yes
PGM Output	Yes	Yes	Yes	Yes
DEOL Zone Supervision	Yes	Yes	Yes	Yes
Intuitive Clock Programming	Yes	No	No	No
Backlighting Adjustment Control	Yes	Yes	Yes	Yes
Buzzer Adjustment Control	Yes	Yes	Yes	Yes
Multiple Chime Per Zone	Yes	Yes	Yes	Yes
Hardware				
Bezel Color	White	White	White	White
Soft/Hard Lens	Hard	Hard	Hard	Hard
Profile	Landscape	Landscape	Landscape	Landscape
* Integrated RF Receiver Models	RFK5500	RFK5501	RFK5516	RFK5508
Buzzer/Backlighting Adjustment Retained After Power Loss	Yes	Yes	Yes	Yes
"Hands Free" Installation Hinge	Yes	Yes	Yes	Yes
Wire Channel	Yes	Yes	Yes	Yes
Single-Gang Box Mount	Yes	Yes	Yes	Yes
Double-Gang Box Mount	Yes	Yes	Yes	Yes
Case Tamper (Dual Tamper Support)	Yes	Yes	Yes	Yes

* RFK versions of these keypads are available with a built-in wireless receiver and support 32 wireless zones and 16 wireless keys



PowerSeries Keypad Overview

PowerSeries Keypad Features Continued

General Features	PK5590CL	LCD5511	LED5511Z
Display Type	Touchscreen	LCD/FIXED	LED
Zone Support	64	64	8
Partition Support	1	8	2
Number of Function Keys	N/A	4	4
Dedicated Function Keys	N/A	No	No
Dedicated FAP Keys	Yes	No	No
Dual FAP Keys	No	Yes	Yes
Key Size	Small	X-Large	X-Large
AC Status LED	No	No	No
Integrated Low Temperature Sensor	No	Yes	No
Zone Input	No	Yes	Yes
PGM Output	No	Yes	No
DEOL Zone Supervision	No	No	No
Intuitive Clock Programming	Yes	No	No
Backlighting Adjustment Control	Yes	No	No
Buzzer Adjustment Control	No	Yes	Yes
Multiple Chime Per Zone	No	Yes	No
Hardware			
Bezel Color	White	White	White
Soft/Hard Lens	Hard	Soft	Soft
Profile	Landscape	Portrait	Portrait
*Integrated RF Receiver Models	N/A	N/A	N/A
Buzzer/Backlighting Adjustment Retained After Power Loss	Yes	No	No
"Hands Free" Installation Hinge	N/A	No	No
Wire Channel	No	Yes	Yes
Single-Gang Box Mount	No	Yes	Yes
Double-Gang Box Mount	No	No	No
Case Tamper (Dual Tamper Support)	No	Yes	Yes

PowerSeries Addressable Zone Expander PC5100

- Connect up to 32 addressable detectors (AML)
- Detectors can be home-run, t-tapped or daisy chained
- Easy detector enroll process
- Compatible with PC1616, PC1832 and PC1864 control panels

Approval Listings: FCC/IC, UL/ULC



PowerSeries 8-Hardwire Zone Expander PC5108

- Adds 8 hardwire zones
- AUX power, 125 mA (PTC protected)
- Compatible with PC1616, PC1832 and PC1864 control panels

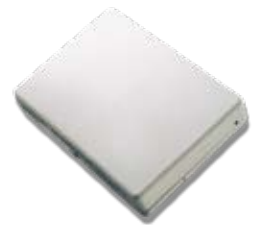
Approval Listings: FCC/IC, UL/ULC



PowerSeries Wireless Receivers RF5132-433

- Supports 32 wireless zones, 16 wireless keys
- All wireless detectors are fully supervised for communication integrity
- Compatible with all PowerSeries control panels

Approval Listings: FCC/IC, UL/ULC



PowerSeries Power Supply Modules PC5200 & PC5204

- Provides up to 1 Amp @ 12 VDC
- Fully supervised for AC failure, low battery and AUX failure
- PC5204 adds 4 programmable high current voltage outputs: rated at 1 Amp @ 12 VDC, output #1 can be used as a supervised bell output
- Compatible with PC1616, PC1832 and PC1864 control panels
- Connect one PC5204 and up to four PC5200 supervised modules on a system

Approval Listings: FCC/IC, UL/ULC



PowerSeries Programmable Output Module PC5208

- Provides 8 low current (50 mA) PGM voltage outputs
- Compatible with PC1616, PC1832 and PC1864 control panels

Approval Listings: FCC/IC, UL/ULC



PowerSeries Multiple Wireless Receiver Module PC5320

- Can be used to connect up to 4 wireless receivers for increased coverage
- Multi-frequency support for combination of 900/433 MHz receivers
- Compatible with all PowerSeries control panels

Approval Listings: FCC/IC, UL/ULC



PowerSeries Printer Interface Module PC5400

- Can be used to support a serial printer
- Compatible with PC1616, PC1832 and PC1864 control panels

Approval Listings: FCC/IC, UL/ULC



PowerSeries Telephone Interface & Automation Control Module ESCORT 5580TC

- Turns any touchtone phone into a talking keypad
- Programmable labels: 6 words per label, 240+ word library
- Built-in X-10 interface: supports up to 32 X-10 devices, 16 schedules, 8 modes
- Built-in thermostat support
- Compatible with PC1616, PC1832 and PC1864 control panels

Approval Listings: FCC/IC, UL/ULC



PowerSeries Status Module PC5601

- Tri-color LED provides security system status at a glance
- Standard single-gang footprint
- Sleek plastic enclosure complements home décor
- Color-coded wiring harness included
- Only supports partition 1
- KEYBUS-compatible with all PowerSeries control panels



Audio Verification

Universal 2-Way Vox Audio Verification Module PC5950

- Supports both 2-way audio VOX and push-to-talk verification
- Supports 4 microphones and 4 speakers
- Silent/Listen-in functionality on hold-up alarms (activates only when an alarm occurs)
- User call-in feature
- KEYBUS direct connect allows all programming to be performed at the system keypad or remotely using DLS2002 software
- KEYBUS compatible with all PowerSeries control panels
- Universal installation compatibility with any control panel using either PGM and/or Bell dry contact outputs

Approval Listings: FCC/IC



Stand-Alone Audio Station PC5961

- Equipped with speaker/microphone
- New modern look
- Specifically designed for 2-way voice verification
- 4-wire connection to module
- Surface or single-gang box mount
- Compatible with PC5950 and PC5900 modules

Approval Listings: FCC/IC



Contoured Audio Station PC5962

- Equipped with speaker/microphone
- Fits seamlessly to side of PK/RFK series of keypads
- New modern look
- Specifically designed for 2-way voice verification
- 4-wire connection to module
- Compatible with PC5950 and PC5900 modules

Approval Listings: FCC/IC



Large Speaker Station PC5964

- Equipped with speaker/microphone
- New modern look
- Specifically designed for 2-way voice verification
- Bell follower functionality (replaces internal sounder on premises PC5950 only)
- 4-wire connection to module
- Surface or single-gang box mount
- Compatible with PC5950 and PC5900 modules

Approval Listings: FCC/IC





Welcome to the Home of the Future



PowerSeries Integration Module IT-120

- Specialty module for integrating DSC security with Life|ware software
- Standard RJ-45 Ethernet connection using Devices Profile for Web Services (DPWS)
- DPWS TCP/IP communication
- 4-wire hook-up to KEYBUS
- Compatible with PC1864, PC1832 and PC1616 control panels

Approval Listings: FCC/IC



PowerSeries Integration Module IT-100

- Bi-directional RS-232 interface
- Real-time zone status
- Fully programmable
- 4-wire hook-up to KEYBUS
- Virtual keypad mode
- Thermostat control functionality via a DSC Escort module
- Supported by many integration drivers
- Compatible with all PowerSeries control panels

Approval Listings: FCC/IC

MAXSYS

MAXSYS Control Panel PC4020

- 16 on-board zones
- Expandable up to 128 zones using hardwire, wireless modules and addressable zones
- Supports up to 16 hardwired keypads
- 8 partitions
- Expandable to 64 wireless zones
- 1,500 user codes (4 or 6 digit)
- 3,000-event buffer
- 9 account and 3 phone numbers
- Built-in telephone line and siren supervision
- Auto SIA and Contact ID formats
- Supports GSM and T-Link™ alarm communicators
- Full upload/download support with DLS download software

Approval Listings: FCC/IC, UL/ULC



MAXSYS Commercial Fire Panel PC4020CF

Includes all the features of the PC4020 Control Panel plus:

- PC4050CR cabinet
- PC4701 module
- Built-in 16 VAC, 40 VA hardwired transformer

Approval Listings: FCC/IC, UL listed under UL864 8th Edition only



MAXSYS Programmable-Message LCD Keypad LCD4501

- Connect up to 16 keypads
- Large, backlit, 2-line, 32-character display
- Plain-language display of zone status, system status, trouble conditions, event buffer, system instructions, date and time
- Ready, Armed and Trouble LEDs
- 5 programmable function keys
- 4 keypad-activated alarms: Panic, Auxiliary, Fire and Duress
- Backlight boost

Approval Listings: FCC/IC, UL/ULC



MAXSYS Programmable Fire-Message LCD Keypad LCD4521

- Includes all the features of the LCD4501 keypad
- Red bezel
- Fire function keys
- Silence Trouble, Silence Bells, Fire Reset, Fire Drill and Lamp Test

Approval Listings: FCC/IC, UL listed under UL864 8th Edition only



MAXSYS 8/16 Hardwire Zone Expanders PC4108A & PC4116

- PC4108A adds 8 hardwire zones
- PC4116 adds 16 hardwire zones
- AUX power rated at 250 mA (PTC protected)

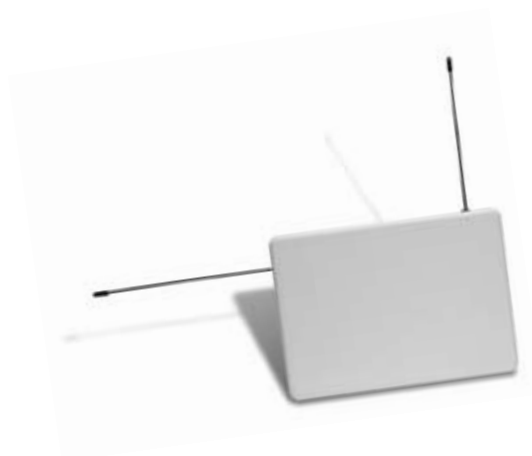
Approval Listings: FCC/IC, UL/ULC



MAXSYS Wireless Receiver PC4164-433

- Supports 64 wireless zones, 16 wireless keys
- All wireless detectors are fully supervised for communication integrity
- Easy sensor enroll process
- Up to 8 receivers on 1 system

Approval Listings: FCC/IC, UL/ULC



MAXSYS Power Supply/Relay Output/Combustion Repeater Module PC4204CX

- Connect up to 16 modules
- Fully supervised for AC failure, low battery and AUX failure
- 4 programmable form 'C' relays

Approval Listings: FCC/IC, UL/ULC



MAXSYS Commercial Fire Power Supply PC4204CXCF

- Includes all the features of the PC4204CX
- Includes PC4052CR cabinet
- Built-in 16 VAC, 40 VA hardwired transformer

Approval Listings: FCC/IC, UL listed under UL864 8th Edition only



MAXSYS 16 Low Current Output Module PC4216

- Provides 16 programmable outputs: rated at 50 mA @ 12 VDC
- Connect up to 9 PC4216 modules per system

Approval Listings: FCC/IC, UL/ULC



MAXSYS Data Interface Module PC4401

- Connect up to 4 modules
- Capable of performing as either a bi-directional RS-232 interface, PC-Link isolator, printer module or DVACS® communicator (Canada only)
- Real-time zone status
- Fully programmable
- 4-wire hook-up to COMBUS
- FCC and IC listed

* DVACS is a registered trademark of Electro Arts Ltd. Scarborough Ontario, Canada.

Approval Listings: FCC/IC, UL/ULC



MAXSYS Telephone Interface and Automation Control Module ESCORT4580

- Turns any touchtone phone into a talking keypad
- Programmable labels: 6 words per label, 240+ word library
- Built-in X-10 interface: supports up to 32 X-10 devices, 16 schedules, 8 modes
- Available in English, Spanish and French

Approval Listings: FCC/IC, UL/ULC



MAXSYS 32/64 Point Graphic Annunciators PC4632 & PC4664

- Egg-crate backplate for flexible LED locations
- Pre-printed point display transparency
- Clear transparencies (2) for custom graphics

Approval Listings: FCC/IC, UL listed under UL864 8th Edition only



MAXSYS Dual-Line Dialer Module PC4701

- Dual, supervised phone line connections
- 1 2-wire Class B/Style B supervised smoke alarm zone
- 1 Class B/Style B waterflow zone
- Fire alarm and fire trouble form 'C' relays

Approval Listings: FCC/IC, UL listed under UL864 8th Edition only, ULC



MAXSYS Dual-Zone Bell Panel PC4702BP

- Connect up to 4 modules
- Provides 2 alarm notification circuits: rated at 1.8 Amps @ 24 VDC each
- Fully supervised outputs for open, short and ground fault
- PTC protected
- Includes: PC4052CR red cabinet, 28 VAC, 180 VA hardwired transformer

Approval Listings: FCC/IC, UL listed under UL864 8th Edition only



MAXSYS 2-Reader Access Control Module PC4820

- Connect up to 16 modules
- Multiple reader technologies
- 2 supervised lock outputs: 250 mA per output
- 64 user access levels
- 2 access door support per module for up to total of 32 on system
- 99 date schedules
- 4 holiday groups
- Arm/Disarm partitions via access control
- PC4053 beige cabinet included

Approval Listings: FCC/IC, UL/ULC



Max-Kit MAXSYS Access Control Kit MAXKIT

This affordable package is the perfect access control starter kit. It has all the essentials you need: control panel, access control module, reader and keys in one low-cost package. If needed, the system can be easily expanded.

Includes:

- 1 PC4020 control panel
- 1 PC4820 2-reader access control module
- 1 P225W26 ioProx reader
- 10 P40KEY ioProx dual-encoded proximity keys



MAXSYS Request-To-Exit Detector T-REX

- MAXSYS supports passive infrared request-to-exit detector with patented X-Y Targeting™ and DSP (Digital Signal Processing)
- To learn more, please visit www.kantech.com

Approval Listings: FCC/IC, UL/ULC



MAXSYS Readers

- MAXSYS supports a wide range of 26-bit Weigand readers: Polaris™, ioProx™, Shadowprox™, HID and Kantech XSF Technologies
- To learn more, please visit www.kantech.com

Approval Listings: FCC/IC



MAXSYS External Battery Charger PS4350R

- Includes PS4085 multi-rate charger module
- Includes PT1012 transformer, 12 VDC, 160 VA
- Space for 60 Ah of rechargeable batteries

Approval Listings: FCC/IC, UL



Introducing the **NEW** DLS IV

DLS IV WILL REQUIRE THE FOLLOWING APPLICATIONS TO BE INSTALLED:

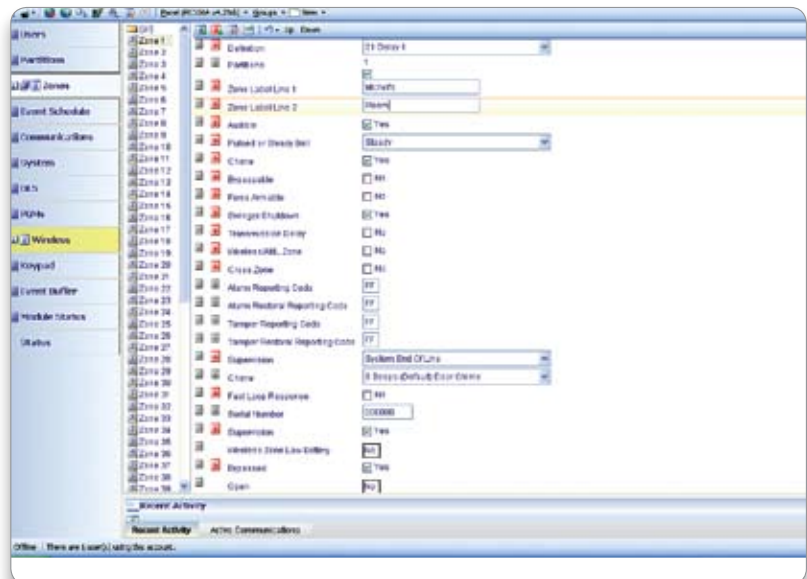
1. .NET Framework 3.5
2. SQL Server Express 2005
3. Visual C++ Runtime components

DLS IV is built with tomorrow in mind. It runs on Microsoft's powerful .NET Framework 3.5 and SQL Server Express 2005 database engine. If you do not currently have these necessary components installed, the DLS IV installer will automatically download the latest version directly from Microsoft.com for you, and install them without any unnecessary intervention from you, the user.

The installation process begins with the DLS IV Updater. This updater will manage the rest of the installation process for you, and will provide updates in the future as DSC® rolls out additional driver packs and feature updates.

- Logical grouping of options
- Additional modem support
- Multiple communication paths available (PSTN, GPRS, and TCP/IP)
- Supports the Alexor suite of products
- Supports the PowerSeries 9047
- Support for the PC1616, PC1832, PC1864 version 4.2
- Live updates automatically notify user that new panels or modules have been released

With logical grouping of options, wizards, and templates DLS has never been easier to navigate and use.



DLS2002 Downloading Software

DLS2002 downloading software by DSC® is much more than just a software package for remotely programming control panels. It's also a great diagnostic tool, and includes features such as auto-detect panel type and version, upgrade wizard, and error checking. DLS2002 will help streamline installations, reduce programming time and decrease service calls. It gives you the ability to make changes to a system remotely in minutes, without having to visit the site. DLS2002 will take your installation and service capabilities to the next level.

DLS2002SA SYSTEM ADMINISTRATOR SOFTWARE

The DLS2002SA System Administrator software is a perfect solution for large or multi-location business applications using the MAXSYS control panel. The software is simple to use and gives users the ability to view and change codes, access cards and schedules, as well as view system status, arm/disarm partitions, and view, sort and print the event buffer. The software can be found in the Products area of the DSC website under the password-protected software section.

Features:

- Intuitive user interface
- Automatic panel and module version detection
- Automatic panel version correction
- Automatic module version correction
- Upgrade wizard
- Error checking
- Batch programming
- System installation graphic
- Supports v4.2 and previous panels

Available accessories:

PCLINK-9

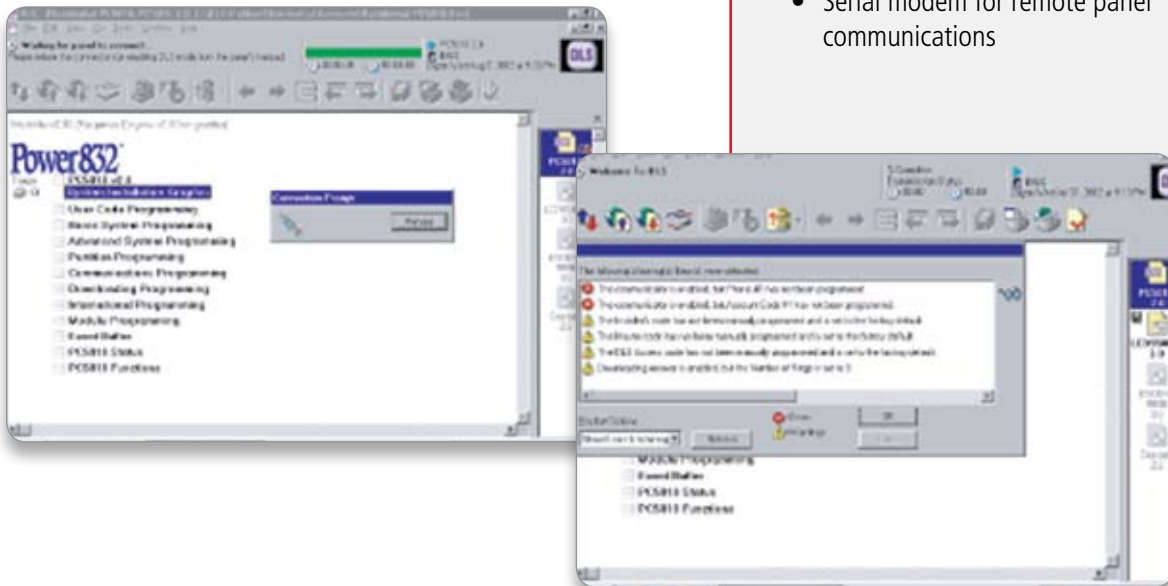
- Direct-connect cable with serial DB-9 connector

PCLINK-SCW

- Direct-connect cable with serial DB-9 connector for PowerSeries 9047

MD-12

- Serial modem for remote panel communications



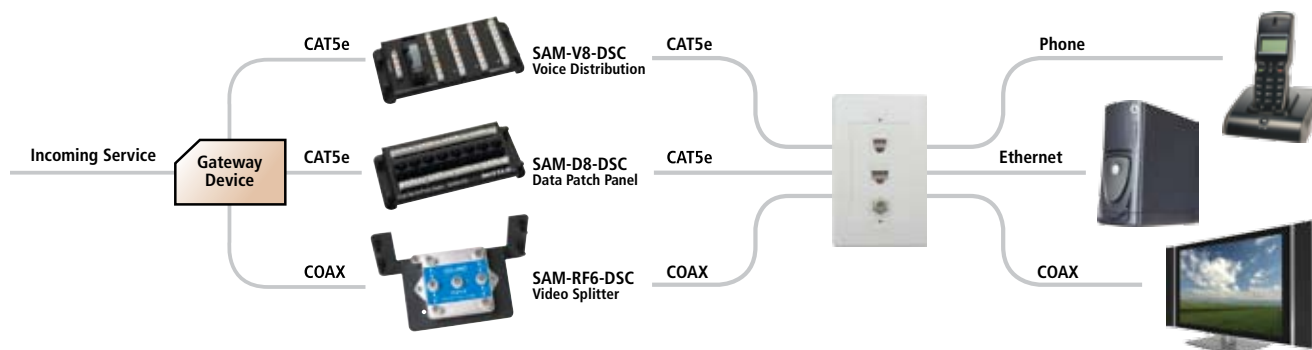
Take advantage of the growth opportunity in the structured cabling market

DSC® structured cabling, in partnership with Suttle, allows homeowners to seamlessly integrate technology into their home, enhancing and simplifying their lives.

A standards-based system of cabling, DSC structured cabling distributes communication services like voice, data and video from a central location over a network of built-in cables throughout a home or office.

Entertainment and lifestyle products popular today, and those to be introduced in the future, can now be easily integrated to provide lifestyle enhancements and create long-term value for a home.

DSC is committed to assisting our security distributors and dealers in taking advantage of the growth opportunity available in the structured cabling market. DSC believes that the intrusion alarm system is the logical place to begin a home or small business structured cabling solution. That's why we're offering a complete suite of structured cabling products and accessories that ensure you have everything you need to offer a complete low-voltage system.



Enclosures

DSC enclosures provide a fast, flexible and clean distribution management solution for voice, data and video connections.

Available in 14", 21", 28", and 42" heights, these rugged 16 gauge enclosures are designed to be either flush mounted between sixteen-inch centered studs or surface mounted via recessed mounting holes.

The enclosures also offer numerous 2.5" cable entry knockouts, a vertical and horizontal mounting-hole pattern, and multiple cable tie attachment points for cleaner cable management.

Model	Dimensions	Description
SAE-14-DSC	14" (H) x 14.25" (W) x 3.75" (D)	14" enclosure ^{1,2,3}
SAE-21-DSC	21" (H) x 14.25" (W) x 3.75" (D)	21" enclosure ^{1,2,3}
SAE-28-DSC	28" (H) x 14.25" (W) x 3.75" (D)	28" enclosure ^{1,2,3}
SAE-42-DSC	42" (H) x 14.25" (W) x 3.75" (D)	42" enclosure ^{1,2,3}
SADC-14 DSCL	14" (H) x 14.25" (W)	14" door ^{2,3}
SADC-21 DSCL	21" (H) x 14.25" (W)	21" door ^{2,3}
SADC-28 DSCL	28" (H) x 14.25" (W)	28" door ^{2,3}
SADC-42 DSCL	42" (H) x 14.25" (W)	42" door ^{2,3}

Note: cULus Listed 1863 Communications-Circuit Accessories
²Note UL Listed 985 Household Fire Warning System Units

¹Note Door cover not included with SAE cabinets
³Note UL 1023 Household Burglar-Alarm System Units



SAE-28-DSC

The versatile 42" split enclosure comes with a cabinet separator, splitting the large opening into 2 unique organized compartments; 14 and 28"

Model	Dimensions	Description
SAE-42EPM-DSC	42" (H) x 14.25" (W) x 3.75" (D)	42" split enclosure ^{4,5,6}
SADDC-1428-DSCL	42" (H) x 14.25" (W)	42" split enclosure doors ^{4,5}

Note: cULus Listed 1863 Communications-Circuit Accessories
³Note UL 1023 Household Burglar-Alarm System Units

⁴Note UL Listed 985 Household Fire Warning System Units
⁶Note SADDC-1428-DSCL split door cover not included with SAE-42EPM-DSC

SADDC-1428 DSCL



Accessories

Model	Dimension	Description
SAM-AM-DSC	4.45" x 6.45"	Accessory mounting plate for use with PC580, PC1555, PC5100, PC5204, PC5208, PC5400, PC5401, PC5700, PC5720, PC4108, PC4216, PC4400, PC4401, Escort 4580/5580TC and PS3085
SAM-CB-DSC	7.75" x 6.45"	Black mounting plate for new PowerSeries control panels PC1616, PC1832, PC1864. Can also be used for PC5950, PC4204, PC4216, PC4702 and PC4936
SAM-MS-DSC	10.6" x 6.45"	Black mounting plate for MAXSYS control panels
SAM-B-DSC	3" x 6.5"	Black mounting bracket for generic modules
SAM-B3-DSC	5.5" x 6.5"	Black mounting bracket for generic modules
SAM-BB-DSC	3.35" x 6.45"	Black mounting bracket for up to 7Ah battery
SAE-LOCK-DSC	N/A	Cabinet door lockset for SADC doors



SAM-AM-DSC

Control Panels with mounting plates

Packed with features, PowerSeries control panels and keypads are easy to install, easy to program and easy to use. PowerSeries control panels and keypads have a proven reputation for providing the value and dependability that security professionals expect. The modular design provides both versatility and flexibility in any application, from small residential to medium-sized commercial.

Model	Description
PC1616SHS	PowerSeries 6-16 zone hybrid control panel
PC1616SHSCP01	PowerSeries 6-16 zone hybrid control panel CP-01 compliant
PC1832SHS	PowerSeries 8-32 zone hybrid control panel
PC1832SHSCP01	PowerSeries 8-32 zone hybrid control panel CP-01 compliant
PC1864SHS	PowerSeries 8-64 zone hybrid control panel
PC1864SHSCP01	PowerSeries 8-64 zone hybrid control panel

Note: All PowerSeries SHS control panels come with a black SAM-CB-DSC structured wiring mounting plate
(Dimensions: 7.75" x 6.45")



PC1864SHSCP01

Voice/Telecom Distribution

Homes today are no longer equipped with merely telephones, but rather telecommunications systems. Many people have home offices and multiple lines for business and personal use, digital service, DSL, call-routing, and more — the applications are endless. Fortunately, DSC structured cabling products can keep it all straight — without rewiring! What's more, these products are designed to grow with you allowing you to meet new telecommunication needs as they arise.

Telecom Modules

Model	Description
SAM-V10-DSC	4 lines to an additional 10 outputs, RJ-31X security interface and expansion through 2 - RJ-45 patch cords (included)
SAM-VX10-DSC	4 lines to an additional 10 outputs, expansion through 2 - RJ-45 patch cords (included)
SAM-V8-DSC	4 lines to an additional 8 outputs, expansion through 2 - RJ-45 patch cords (included)

Note: 4 telecom line expansion modules with 110 IDC connections with mounting plate (Dimensions 3"(H) x 6.5"(W) x 1" (D))

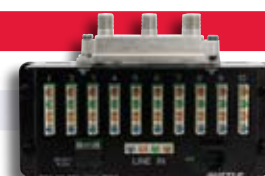


SAM-VX10-DSC

Telecom and Video Combo Expansion Modules

Model	Description
SAM-VV4-DSC	4 lines to 10 output and 1 x 4 RF splitter combo module
SAM-VV6-DSC	4 lines to 10 output and 1 x 6 RF splitter combo module
SAM-VV8-DSC	4 lines to 10 output and 1 x 8 RF splitter combo module

Note: 10-port 110 IDC telecom expansion modules combined with 4 – 8 RF Splitter combo modules with mounting plate
(Dimensions 4.15"(H) x 6.5"(W) x 2.95"(D))



SAM-VV8-DSC

Data Distribution

DSC structured cabling products allow you to experience the Internet on any network-enabled device from any room in your house, or all of them. If you receive broadband service from a DSL, cable modem or even the new fiber-to-the-home networks, we can hook you up. Plus, we allow your computers to talk with each other and share not just the printer and fax machine, but files, pictures, games, music, movies and more.

8-Port Voice/Data Patch Module SAM-D8-DSC

- Dimensions: 3" (H) x 6.5" (W) x 1" (D)
- Description: 8-port CAT5e data/voice networking module, RJ45 to 110 IDC blocks, 568A wiring



SAM-D8-DSC

DSL Filter Module SAM-DSL-DSC

- Dimensions: 1.5" (H) x 6.5" (W) x 1" (D)
- Description: Centrally based DSL filter module; eliminates the need for filtering at jack locations

4-Port 10/100 Router with Firewall SAM-RTR4-DSC

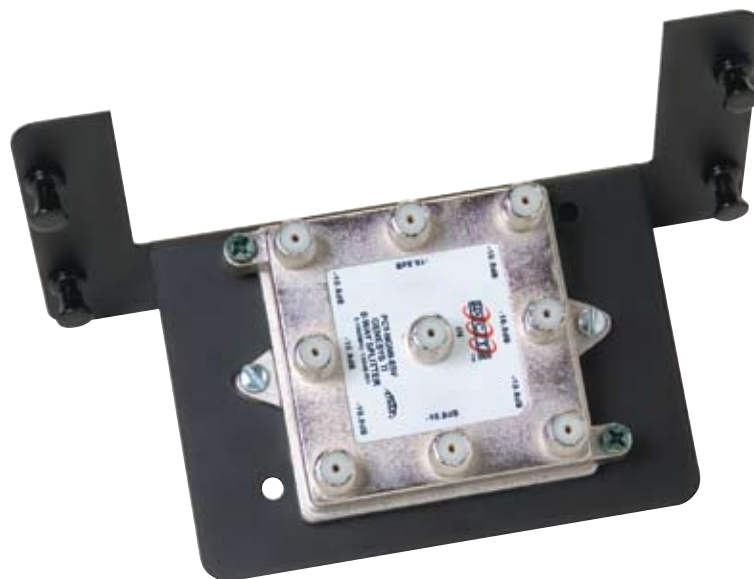
- Dimensions: 3.75" (H) x 6.5" (W) x 1.75" (D)
- Description: 4-port 10/100 router, firewall capable, includes five 12" patch cords and external DC power adapter



SAM-RTR4-DSC

8-Port 10/100 Switch with Integrated Power Adapter SAM-SW8U-DSC

- Dimensions: 5.5" (H) x 6.5" (W) x 1.5" (D)
- Description: 8-port 10/100 switch with internally contained power adapter



Video Distribution

You can never have too many televisions. In fact, with DSC structured cabling products you can have one in every room – or several televisions in a single room – each broadcasting the entertainment of your choice from different sources, such as satellites, cable TV, computers or video game consoles.

Model	Dimensions	Description	Specifications
SAM-RFBA11-DSC	3" (H) x 6.5" (W) x 2" (D)	1x1 Bi-Directional RF Amplifier Module 1x1 Bi-directional RF amplifier; 15 dB, power passing (forward only), SCTE compliant, includes DC power adapter	5-42/54-1000 MHz frequency range, 120 dB RFI shielding, 6 kV, B3 surge with stand, 15 dB forward gain, 0 dB reverse gain, 15 V, 200 mA power req. F Ports – Digital – Meets ANSI/SCTE 02 1997
SAM-RFBA18-DSC	3" (H) x 6.5" (W) x 2" (D)	1x8 Bi-Directional RF Amplifier Module 1x8 Bi-directional RF amplifier; 15 dB, power passing (forward only), SCTE compliant, includes DC power adapter	5-42/54-1000 MHz frequency range, 120 dB RFI shielding, 6 kV, B3 surge withstand, 4.5 dB forward gain, 0 dB reverse gain, 12 V, 300 mA power req. F Ports – Digital – Meets ANSI/SCTE 02 1997
SAM-RFBA38-DSC	3" (H) x 6.5" (W) x 2" (D)	3x8 Bi-Directional RF Amplifier Module 3x8 Bi-directional RF amplifier; 15 dB, power passing (forward only), SCTE compliant, includes DC power adapter	5-42/54-1000 MHz frequency range, 120 dB RFI shielding, 6 kV, B3 surge withstand, 4.5 dB forward gain, 0 dB reverse gain, 12 V, 300 mA power req. F Ports – Digital – Meets ANSI/SCTE 02 1997
SAM-RF3-DSC	2.75" (H) x 6.5" (W) x 2.8" (D)	1x3 RF Splitter Module (1 GHz) SCTE compliant 1x3 1 GHz RF splitter using F connectors	5-1000 MHz frequency range, 22-29 dB return loss, 7-8 dB insertion loss, 27-36 dB isolation 120 dB RFI shielding, F Ports – Digital – Meets ANSI/SCTE 02 1997
SAM-RF4-DSC	2.75" (H) x 6.5" (W) x 2.8" (D)	1x4 RF Splitter Module (1 GHz) SCTE compliant 1x4 1 GHz RF splitter using F connectors	5-1000 MHz frequency range, 22-29 dB return loss, 7-8 dB insertion loss, 27-36 dB isolation 120 dB RFI shielding, F Ports – Digital – Meets ANSI/SCTE 02 1997
SAM-RF6-DSC	2.75" (H) x 6.5" (W) x 2.8" (D)	1x6 RF Splitter Module (1 GHz) SCTE compliant 1 x 6 1 GHz RF splitter using F connectors	5-1000 MHz frequency range, 17-21 dB return loss, 9-11.5 dB insertion loss, 21-24 dB isolation 130 dB RFI shielding, F Ports – Digital – Meets ANSI/SCTE 02 1997



Video Distribution (continued)

Model	Dimensions	Description	Specifications
SAM-RF8-DSC	2.75" (H) x 6.5" (W) x 2.8" (D)	1x8 RF Splitter Module (1 GHz) SCTE compliant 1 x 8 1 GHz RF splitter using F connectors	5-1000 MHz frequency range, 21-30 dB return loss, 10-11.5 dB insertion loss, 21-40 dB isolation 120 dB RFI shielding, F Ports – Digital – Meets ANSI/SCTE 02 1997
SAM-RFH2-DSC	2.75" (H) x 6.5" (W) x 2.8" (D)	1x2 RF Splitter Module (3 GHz) SCTE compliant 1x2 3 GHz RF splitter using F connectors	5-2400 MHz, 130 dB RFI shielding, 7.2 dB inser- tion loss, 22 dB isolation, 12 dB return loss in, 13 dB return loss out, F ports, – Meets ANSI/SCTE 02 2006
SAM-RFH3-DSC	2.75" (H) x 6.5" (W) x 2.8" (D)	1x3 RF Splitter Module (3 GHz) SCTE compliant 1x3 3 GHz RF splitter using F connectors	5-2400 MHz, 130 dB RFI shielding, 11.2 dB inser- tion loss, 22 dB isolation, 12 dB return loss in, 11 dB return loss out, F ports, – Meets ANSI/SCTE 02 2006
SAM-RFH4-DSC	2.75" (H) x 6.5" (W) x 2.8" (D)	1x4 RF Splitter Module (3 GHz) SCTE compliant 1 x 4 3GHz RF splitter using F connectors	5-2400 MHz, 130 dB RFI shielding, 12.5 dB inser- tion loss, 20 dB isolation, 12 dB return loss in, 12 dB return loss out, F ports, – Meets ANSI/SCTE 02 2006
SAM-RFH6-DSC	2.75" (H) x 6.5" (W) x 2.8" (D)	1x6 RF Splitter Module (3 GHz) SCTE compliant 1x6 3 GHz RF splitter using F connectors	5-2400 MHz, 130 dB RFI shielding, 14.5 dB inser- tion loss, 22 dB isolation, 13 dB return loss in, 13 dB return loss out, F ports, – Meets ANSI/SCTE 02 2006
SAM-RFH8-DSC	2.75" (H) x 6.5" (W) x 2.8" (D)	1x8 RF Splitter Module (3 GHz) SCTE compliant 1x8 3 GHz RF splitter using F connectors	5-2400 MHz, 130 dB RFI shielding, 15.2 dB inser- tion loss, 20 dB isolation, 13 dB return loss in, 12 dB return loss out, F ports, – Meets ANSI/SCTE 02 2006
SAM-MS34-DSC	1.5"(H) x 6.5"(W) x 1"(D)	video switcher DirectTV approved satellite 3 x 4 multi switch Note: DirectTV approved satellite switch	

Wireless

2-Way Wireless Key WT4989

- Backlit ICON display
- Built-in buzzer for audible feedback
- Key tactile feedback
- 4 one touch function keys, programmable for up to 6 functions
- Status button indication

Approval Listings: FCC/IC, UL/ULC

- Wireless key keylock
- Active alarm indication
- Water resistant
- Multifunction clip
- Nominal Battery life - 3 years
- Compatible with Alexor



1-Button Personal Panic WS4938

- Activation via 1 large, easy-to-use button
- Full 2-second delay on panic button
- Integrated LED to indicate signal transmission
- Neck strap and multifunction belt clip included

Approval Listings: FCC/IC, UL/ULC

- Reliable 433 MHz technology
- Water resistant
- Long-life lithium batteries included
- Supervised



2-Button Wireless Key WS4949

- 2-button, 3-function wireless key
- Activation via 2 large, scratch-resistant buttons
- Full 3-second delay on panic function

Approval Listings: FCC/IC

- Integrated LED to indicate signal transmission
- Reliable 433 MHz technology
- Long-life lithium batteries included
- Water resistant



4-Button Wireless Key WS4939

- Durable, scratch-resistant buttons
- 4 programmable function keys
- Long-life lithium batteries included
- Full 3-second delay on panic alarm to reduce false alarms

Approval Listings: FCC/IC, UL/ULC, SIA CP-01

- Multifunction belt clip included
- Reliable 433 MHz technology
- Optional generic rubber insert included
- Water resistant



4-Button Wireless With Built-In Flashlight WS4969

- Built-in, high-intensity LED flashlight
- Durable, scratch-resistant buttons
- 4 programmable function keys
- Long-life lithium batteries included

Approval Listings: FCC/IC

- Full 3-second delay on emergency alarm to reduce false alarms
- Reliable 433 MHz technology
- Water resistant



5-Button Wireless Key WS4959

- 12 programmable function keys
- Integrated tri-color LED to indicate signal transmission and security modes
- 4 durable, scratch-resistant buttons and center toggle button

Approval Listings: FCC/IC

- Multifunction belt clip included
- Reliable 433 MHz technology
- Full 3-second delay on panic function
- Long-life lithium batteries included
- Water resistant



4-Button Wireless Wall Plate WS4979

WS4979 features a slim, attractive design that fits nicely on homeowners' inside walls or other accessible locations. The WS4979 has all of the same functions as the WS4939 4-button wireless key and can be mounted or installed easily, at minimal cost.

- Slim, attractive design
- Lightweight
- Durable, easy to operate buttons
- 4 programmable function keys
- Powered by long-life lithium batteries (included)
- Full three-second delay on panic alarm to reduce false alarms
- Reliable 433 MHz technology
- Additional functions: open garage doors turn on lights, open powered gates, etc.
- Programmable Disarm function

Approval Listings: FCC/IC



Wireless Door/Window Contact WS4945*

- Built-in reed switch
- Normally closed external contact input
- 1 lithium battery included
- Available in brown housing
- Case and wall tamper

* WS4945N normally open version available

Approval Listings: FCC/IC, UL/ULC



Vanishing Contact EV-DW4975

- Built-in reed switch
- Wafer-thin profile
- Long-life lithium battery included
- 5/8" (16 mm) magnet gap
- Reliable 433 MHz technology
- Includes double-sided tape

Approval Listings: FCC/IC



Wireless Recessed Door Transmitter EV-DW4917

- Small, compact design
- Long-life lithium battery included
- Flexible mounting options (screw mount or press fit)
- Reliable 433 MHz technology
- Powerful, rare earth magnet
- Ships complete with flanged/non-flanged, brown/white access caps

Approval Listings: FCC/IC



Tri-Zone Wireless Door/Window Contact WS4965

- 3 zones in 1 (each zone has an individual serial number)
- 1 reed/magnet combination zone
- Tilt switch mode for overhead doors
- 2 normally closed external contact inputs
- Long-life lithium battery included
- 1/2" (13 mm) maximum magnet gap
- Low-battery LED indicator
- Case tamper
- Reliable 433 MHz technology
- Includes backplate

Approval Listings: FCC/IC, UL/ULC



Wireless Pet-Immune Passive Infrared Detector WS4904P

- WS4904P replaces the WLS904PL-433
- Based on the Bravo® 3D hardwire motion detector
- High-traffic shutdown
- WS4904P features pet immunity up to 60 lbs (27 kg)
- 1 lithium battery included

Approval Listings: FCC/IC, UL/ULC



Wireless Pet-Immune Passive Infrared Detector WLS914-433

- Based on the Bravo®6 hardwire motion detector
- High-traffic shutdown
- Pet immunity up to 85 lbs (39 kg)
- 4 'AA' batteries included

Approval Listings: FCC/IC, UL/ULC



Wireless CO Detector WS4913

Colorless, tasteless, odorless but deadly, carbon monoxide (CO) is impossible to detect without a warning device. The WS4913 Wireless Carbon Monoxide Detector from DSC is the perfect complement to DSC's full security line-up. The WS4913 provides front-line protection against the silent threat of carbon monoxide poisoning.

- Slim-line design
- Built-in 85dB alarm at 10 ft (3 m)
- Malfunction supervision
- Low sensitivity supervision
- Electrochemical sensing technology
- Transmits RF status, low battery and tamper condition
- Hush feature
- Wall tamper
- Onboard LEDs indicate:
 - * Red – Alarm
 - * Yellow – Trouble
 - * Green – Power
- 3-5 year battery life
- End-of-Life (EOL) indicator (5 year)
- Low battery supervision
- Compatible with Alexor

Approval Listings: FCC/IC, UL/CUL



NEW

Wireless Photoelectric Smoke Detector with Heat WS4916

- Automatic drift compensation
- Built-in, dual-sensor heat detector with fixed heat and rate of rise (non UL listed)
- Built-in 85 dB horn
- Local test button
- Low profile design
- High/Low sensitivity reporting
- Low battery indication
- Easy-maintenance removable smoke chamber
- Non-contact sensitivity reading with handheld test meter (FSD-100)
- Long-life lithium batteries included
- UL/ULC/EN listed for residential applications

Approval Listings: FCC/IC, UL/ULC, CSFM



Wireless Photoelectric Smoke Detector WS4926

- Automatic drift compensation
- Built-in 85 dB horn
- Local test button
- Low profile design
- High/Low sensitivity reporting
- Low battery indication
- Easy-maintenance removable smoke chamber
- Non-contact sensitivity reading with handheld test meter (FSD-100)
- Long-life lithium batteries included
- UL/ULC listed for residential applications

Approval Listings: FCC/IC, UL/ULC, CSFM



NEW

2-Way Wireless Indoor Siren WT4901

- Siren Output – 85dB
- Siren sounds for alarms, door chimes, entry/exit delay and troubles
- Onboard test button
- Transmits RF status, low battery and tamper condition
- Front and back tamper detection
- Nominal battery life - 2 years
- Compatible with Alexor

Approval Listings: FCC/IC, UL/ULC



NEW

2-Way Wireless Outdoor Siren WT4911

- Siren Output – 105dB
- Siren sounds for alarms and squawks
- Strobe light functionality for visual indication
- Provides temperature to WT5500 Wire-free keypad
- Local and remote test capability
- Transmits RF status, low battery and tamper condition
- Large print area for company logo
- Front and back tamper detection
- IP34 rating
- Nominal battery life - 4 years
- Compatible with Alexor

Approval Listings: FCC/IC



NEW

Wireless Flood Detector WS4985

The wireless flood detector is based on the WS4945 wireless door/window contact that is connected to a water probe through a 6 foot-wire. The product is enrolled as a flood zone detector with the following DSC® control panels: Alexor, PowerSeries 9047, PC1616, PC1832, PC1864, PC4020, and is fully supervised.

- Built-in reed switch
- Normally closed external contact input
- 1 lithium battery included
- Available in brown housing
- Case and wall tamper
- End-of-line resistor
- 4-7 year battery life
- Compatible with Alexor

Approval Listings: FCC/IC



NEW

Wireless Glassbreak Detector WLS912L-433

- Based on the Acuity® glassbreak detector
- Tamper-activated test mode: should be tested using the AFT-100 glassbreak simulator
- 2 lithium batteries included

Approval Listings: FCC/IC, UL/ULC



Wireless Shock Sensor With Built-In Door/Window Contact EV-DW4927

- Electro mechanical shock sensor
- Adjustable sensitivity
- Pre-alert
- Built-in reed contact
- User-replaceable lithium battery

Approval Listings: FCC/IC



2-Channel Wireless Receiver RXL2-433

- 2 on-board form 'C' relay outputs
- Supports up to 10 wireless buttons per output
- 4 programmable relay options (Momentary, Timed, Latched and Continuous)
- Independent of security system type
- No serial number to program
- 120 VAC plug-in transformer included
- Reliable 433 MHz technology
- Compatible with WS4949, WS4939, WS4959 and WS4969 wireless keys

Approval Listings: FCC/IC



Wireless Device Programmer WP-433

- Simplifies enrolling and programming of wireless devices
- Supports all DSC door/window contacts, PIRs, glassbreak detectors and wireless keys



Addressable

Addressable Passive Infrared Detector AMB-300

- Based on the Bravo®3 hardwire motion detector
- Patented MLSP (Multi-Level Signal Processing)
- Interchangeable lenses: wall-to-wall lens (standard), curtain lens, pet-immune lens and corridor lens
- Built-in tamper switch

Approval Listings: FCC/IC, UL/ULC



Addressable Pet-Immune Passive Infrared Detector AMB-600

- Based on the Bravo®6 hardwire motion detector
- Patented MLSP (Multi-Level Signal Processing)
- Provides pet immunity up to 85 lbs (39 kg)
- Built-in tamper switch

Approval Listings: FCC/IC, UL/ULC



Addressable Ceiling-Mount Passive Infrared Detector AMB-500

- Based on the Bravo®5 hardwire motion detector
- Coverage diameter based on mounting height
- Built-in tamper switch

Approval Listings: FCC/IC, UL/ULC



Addressable Glassbreak Detector AMA-100

- Based on the Acuity® hardwire glassbreak detector
- Detects all types of breaking glass: plate, laminated, safety and tempered
- Can be tested using the glassbreak simulator (AFT-100)
- Built-in tamper switch

Approval Listings: FCC/IC, UL/ULC



FSB-210 Series Addressable Photoelectric Smoke Detectors FSB-210B (Without Heat Sensor) FSB-210BT (With Heat Sensor) – Fixed heat with rate of rise (non UL listed)

- Automatic drift compensation
- Easy-maintenance removable smoke chamber
- Non-contact sensitivity reading with handheld test meter (FSD-100)
- Self diagnostics

Approval Listings: FCC/IC, UL/ULC



Addressable Contact Modules

Model	Description
AMP-700	Door/Window contact with built-in reed switch
AMP-701	Door/Window contact with normally closed input
AMP-702	Fire point module with normally open, EOL resistor supervised input
AMP-704	4-zone door/window contact with normally closed, single or double EOL inputs

Approval Listings: FCC/IC, UL/ULC



Loop Isolator Module AML-770B

- Can be used to isolate burglary detectors from fire detectors on the same wire run

Approval Listings: FCC/IC, UL/ULC



Loop Repeater/Isolator Module AMX-400

- Can be used to repeat and re-power the AML loop to allow for longer wire runs
- Requires 12 VDC power source
- Will isolate the wire run in the event of a problem
- Provides additional 170 mA

Approval Listings: FCC/IC, UL/ULC



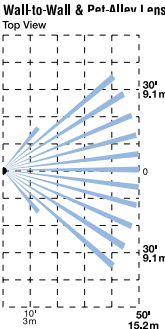
Motion Detectors

Bravo® 300 PIR Series of Motion Detectors BV-300

The Bravo® 300 motion detectors feature patented Multi-Level Signal Processing (MLSP) for accurate detection of human IR energy over a broad range of temperatures.

- Exceptional catch performance at elevated temperatures
- Sensitivity adjustment to configure the detector for normal or hostile environments
- High-level static and transient protection

Approval Listings: FCC/IC, UL/ULC

Model	Description	Coverage Pattern
BV-300	Form 'A' alarm contact	
BV-300D	Digital, Form 'A' alarm contact	
BV-300DP	Digital, Form 'A' alarm contact with pet immunity	
BV-300P	Form 'A' alarm contact with pet immunity	
BV-L1	Wall-to-Wall lens	
BV-L2	Corridor lens	
BV-L3	Curtain lens	
BV-L4	Pet Alley lens	



Bravo® 5 360° Ceiling-Mount PIR Motion Detectors

- Digital signal analysis for consistent detection throughout the coverage pattern
- Temperature compensation for improved catch performance at critical temperatures
- Patented Multi-Level Signal Processing (MLSP) for accurate detection of human IR energy over a broad range of temperatures
- Sensitivity adjustment to configure the detector for normal or hostile environments
- High-level static and transient protection
- Exceptional white light immunity
- Excellent RF immunity

Approval Listings: FCC/IC, UL/ULC

PIR Only

Model	Description
BV-500	Form 'A' alarm contact
BV-501	Form 'A' alarm contact & tamper switch
BV-502	Form 'C' alarm contact & tamper switch

PIR and Glassbreak

Model	Description
BV-500GB	Form 'A' alarm contact (motion), form 'C' alarm contact (glassbreak)
BV-501GB	Form 'A' alarm contact (motion), form 'C' alarm contact (glassbreak) & tamper switch
BV-502GB	Form 'C' alarm contact (motion), form 'C' alarm contact (glassbreak) & tamper switch



Bravo® 6 Twin, Dual-Element, Pet-Immune PIR Motion Detectors

- Digital signal analysis for consistent detection throughout the coverage pattern
- Digital temperature compensation for improved catch performance at critical temperatures
- Patented Multi-Level Signal Processing (MLSP) for accurate detection of human IR energy over a broad range of temperatures
- 85 lbs (39 kg) pet immunity

Approval Listings: FCC/IC, UL/ULC

Optional mounting brackets available: DM-W (wall-mount bracket) or DM-C (ceiling-mount bracket)

Model	Description
BV-600	Form 'A' alarm contact
BV-601	Form 'A' alarm contact & tamper switch
BV-602	Form 'C' alarm contact & tamper switch



Encore™ PIR Motion Detectors

Encore swivel-mount PIR motion detectors use a digital, microprocessor-controlled fresnel lens to deliver stable and accurate detection without sacrificing catch performance. Vertical Beam Shaping (VBS) provides pet immunity up to 60 lbs (27 kg), while a unique cover hinge allows the detector to be installed right up to the ceiling.

- Fresnel lens technology
- Digital signal analysis for consistent detection throughout the coverage pattern
- Digital temperature compensation
- Patented Multi-Level Signal Processing (MLSP)
- Vertical Beam Shaping (VBS) provides pet immunity up to 60 lbs (27 kg), available with EC-301DP series
- Concealed wiring channel
- EC-BRKT swivel-mount bracket for the ultimate in detector location and installation flexibility (available separately)

Approval Listings: FCC/IC, UL/ULC

Model	Description	Coverage Pattern
EC-301D	Digital, Form 'A' alarm contact & tamper switch	
EC-301DP	Digital, Form 'A' alarm contact & tamper switch with pet immunity	

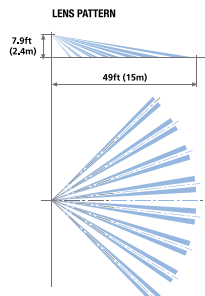


PIR Detector with Pet Immunity LC-100-PI & LC-120-PI

The LC-100-PI (Form A contact) and LC-120-PI (Form C contact) detectors feature intelligent signal analysis for reliable detection, pet immunity up to 55 lbs (25 kg) and a slim design that complements any décor.

- Form "A" or "C" alarm contact and tamper switch
- Digital signal analysis
- Pet immunity up to 55 lbs (25 kg)
- Quad Linear Imaging Technology for sharp analysis of body dimensions and differentiation from backgrounds and pets
- Advanced ASIC-based electronics
- Compact design for residential installations
- Adjustable variable pulse count
- PIR sensitivity adjustment
- Height installation calibration free
- Available in packages of 6 (LC-100-PI-6PK)
- LC-L1ST bracket available separately

Approval Listings: FCC/IC, UL/ULC

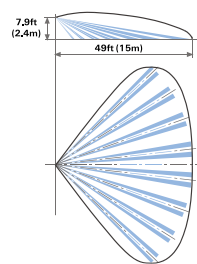
Model	Description	Coverage Pattern
LC-100-PI-6PK	Form 'A' alarm contact & tamper switch	
LC-120-PI	Form 'C' alarm contact & tamper switch	

PIR Detector with Pet Immunity LC-103-PIMSK, LC-123-PIMSK, LC-104-PIMW AND LC-124-PIMW

The LC-103-PIMSK, LC-123-PIMSK, LC-104-PIMW and LC-124-PIMW are dual-technology motion detectors that combine passive infrared and microwave detection with pet immunity. LC-103-PIMSK and LC-123-PIMSK also support anti-masking. The anti-masking feature prevents intruders from defeating the detector by covering its field of view.

- Anti-masking (LC-103-PIMSK / LC-123-PIMSK)
- Form "A" or "C" alarm contact and tamper switch
- Digital signal analysis
- Pet immunity up to 55 lbs (25 kg)
- Quad Linear Imaging Technology for sharp analysis of body dimensions and differentiation from backgrounds and pets
- Microwave detection based on Doppler concept
- Unique microwave motion sensor module with micro-strip patch antenna
- Advanced ASIC-based electronics Height installation calibration free
- 2-way PIR/microwave sensitivity adjustment
- User-friendly installation with or without swivel-mount bracket (available separately: LC-L1ST)

Approval Listings: FCC/IC, UL/ULC

Model	Description	Coverage Pattern
LC-103-PIMSK-W	Form 'A' 10.525 GHz alarm contact & tamper switch	
LC-104-PIMW-W	Form 'A' 10.525 GHz alarm contact & tamper switch	
LC-123-PIMSK-W	Form 'C' 10.525 GHz alarm contact & tamper switch	
LC-124-PIMW-W	Form 'C' 10.525 GHz alarm contact & tamper switch	

Dual-Tech Outdoor Motion Sensor (Single PIR & Microwave) with adjustable Pet Immunity LC-151

The LC-151 is a unique motion detector utilizing a single passive infra-red element and Microwave technology and is designed for outdoor use in the most severe climatic conditions. The LC-151 can also accommodate pets with the addition of optional pet immunity lenses. High reliability is achieved by combining both dual tech hardware with highly sophisticated software, greatly reducing the possibility of false alarms.

- Frequency: 10.525 GHz
- Microwave detection based on Doppler concept
- N.O. & N.C. relays switched at the same time
- Installation height is calibration free from 6 ft to 8 ft (1.8 m to 2.4 m)
- Pet Immune up to 33 lbs (15 kg) without pet immunity lens or up to 80lb (36kg) when using supplied LC-F1-15X pet immunity lens
- PIR sensitivity adjustment
- MW intensity selection
- Temperature compensation
- Microcontroller signal processing
- Front and back tamper protection
- Unique waterproof and seal plastic design
- Detection range: up to 49 ft (15 m)
- Detects human intruders walking or running
- No maintenance required
- High RFI/EMI immunity
- Protection from: direct sunlight, wind up to 30 m/sec, snow and rain, small animals, removal of top cover and removal from mounting bracket
- Rain and dust proof: IP65

Approval Listings: FCC/IC

Model	Description	Coverage Pattern
LC-151	Form 'C' alarm contact and tamper switches	

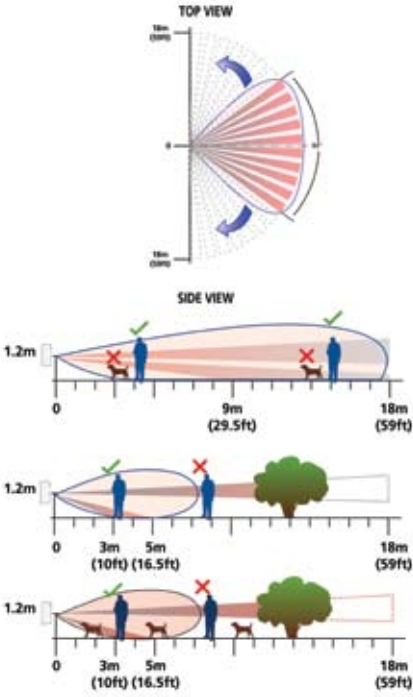

Dual-Tech Outdoor Motion Sensor (Double PIR & Microwave) with Pet Immunity LC-171

The LC-171 is a unique motion detector utilizing dual passive infra-red elements and Microwave technology and is designed for outdoor use in the most severe climatic conditions. The LC-171 can also accommodate pets.

High reliability is achieved by combining both dual tech hardware with highly sophisticated software and an adaptive coverage area, greatly reducing the possibility of false alarms. The active elements are comprised of a dual element PIR and advanced Microwave detector inside a stylish, rigid plastic body.

- Frequency: 24.125 GHz
 - Microwave detection based on Doppler concept
 - N.O. & N. C. Relays switched at the same time
 - Pet immunity up to 77 lbs (35 kg)
 - 16 levels of PIR sensitivity adjustment and 3 microwave sensitivity groups
 - Temperature compensation
 - Microcontroller signal processing
 - Front and back tamper protection
 - Audible indication of walk test and intruder detection
- Unique waterproof sealed plastic design
 - Detection range: up to 59 ft (18 m)
 - Detect human intruders walking or running
 - No maintenance required
 - High RFI/EMI immunity
 - Protection from: direct sunlight, wind up to 30 m/sec, snow and rain, small animals, removal of the top cover and removal from mounting bracket
 - Rain and dust proof: IP65

Approval Listings: FCC/IC

Model	Description	Coverage Pattern
LC-171	Form 'C' alarm contact and tamper switches	<div></div> <div></div>

Glassbreak Detectors

Acuity® Glassbreak Detectors

- Omni-directional microphone
- Advanced microprocessor-based glassbreak sensor
- High-level static and transient protection
- High RF immunity with SMD construction
- White noise rejection mechanism
- Installer test mode for glassbreak sensor (AFT-100 tester required)
- Alarm memory (latching LED) for glassbreak sensor
- MOV transient/static protection
- Jumper selectable sensitivity range

Approval Listings: FCC/IC, UL/ULC

Wall-Mount

Model	Description
AC-100	Form 'A' alarm contact
AC-101	Form 'A' alarm contact & tamper switch
AC-102	Form 'C' alarm contact & tamper switch

Ceiling Mount

Model	Description
AC-500	Form 'A' alarm contact



Glassbreak Detector DG-50AU

- Clean, modern design blends with any décor
- Advanced signal discrimination for accurate identification of breaking glass
- Resistant to blinding by background noises
- Sensitivity adjustment potentiometer
- Anti-shock design prevents false alarms from mechanical shock
- MOV static/lighting protection
- SMD construction and integral ground shield for high RF immunity

Approval Listings: FCC/IC



Accessories: Glassbreak Simulator AFT-100

The AFT-100 glassbreak simulator provides the most reliable and accurate indication of the correct mounting location for the detector. Do not install the detector beyond the maximum recommended range, even if the glassbreak simulator reports additional range. Future changes in room acoustics could reduce any additional range.



Shock Sensor SS-102

- Unique bi-colored LED to indicate minor or major attacks
- Anti-tamper protection
- Moisture-resistant electronics module
- Sensitivity adjustment
- High immunity to low-frequency false alarms and radio interference
- Compatible with all makes of control panels
- SS-102 is able to monitor for minor vibrations (and count them to a preset limit) and for major attacks at the same time

Approval Listings: FCC/IC





Wired Photoelectric Smoke Detectors FSA-210/410

- Automatic drift compensation
- Built-in, dual-sensor heat detector (option)
- Built-in 85 dB horn (option)
- Easy-maintenance removable smoke chamber
- Interconnectable using PRM-2W/4W polarity reversal modules
- Non-contact sensitivity reading with handheld test meter (FSD-100)
- Low profile design
- Local test button

Approval Listings: FCC/IC, UL/ULC, MEA, CSFM

FSA-210

Model	Description
FSA-210(x)*	2-wire photoelectric smoke detector
FSA-210(x)T*	2-wire photoelectric smoke detector w/ heat detector
FSA-210(x)ST*	2-wire photoelectric smoke detector w/ integral sounder & heat detector
FSA-210(x)RT*	2-wire photoelectric smoke detector w/ aux. relay & heat detector

FSA-410

Model	Description
FSA-410(x)*	4-wire photoelectric smoke detector
FSA-410(x)T*	4-wire photoelectric smoke detector w/ heat detector
FSA-410(x)RT*	4-wire photoelectric smoke detector w/ aux. relay & heat detector
FSA-410(x)S*	4-wire photoelectric smoke detector w/ integral sounder
FSA-410(x)ST*	4-wire photoelectric smoke detector w/ integral sounder & heat detector
FSA-410(x)RST*	4-wire photoelectric smoke detector w/ integral sounder, aux. relay & heat detector



Accessories

PRM-2W

Polarity reversal module, PCB for panel mounting
(2-wire interconnect)

Approval Listings: FCC/IC, UL/ULC

PRM-2WC

Polarity reversal module in plastic case
(2-wire interconnect)

Approval Listings: FCC/IC, UL/ULC

PRM-4W

Polarity reversal module, PCB for panel mounting
(4-wire interconnect)

Approval Listings: FCC/IC, UL/ULC

PRM-4WC

Polarity reversal module in plastic case
(4-wire interconnect)

Approval Listings: FCC/IC, UL/ULC

RM-2

End-of-line power supervisory relay
(4-wire detectors only)

Approval Listings: UL

*Legend (x) = 'A' Canadian model number (ULC listed)
(x) = 'B' U.S. model number (UL listed)



Handheld Test Meter FSD-100

Precise and quick sensitivity testing is easily accomplished with the non-contact FSD-100 handheld test meter. Powered by a standard 9V alkaline battery and small enough to fit inside a shirt pocket, the FSD-100 holds 500 readings that can be downloaded to any computer. To initiate a reading, a technician simply holds the FSD-100 near a DSC smoke detector and activates the detector's test button.

Approval Listings: FCC/IC, UL/ULC



Transmitters

GSM/GPRS Wireless Alarm Communicator GS2065

- Back up and primary GSM/GPRS alarm communication
- Panel remote uploading/downloading support via GSM/GPRS
- Supervision heartbeats via GSM/GPRS
- 128-bit AES encryption via GSM/GPRS
- Full event reporting
- SIA format
- SIM Card (included)
- PC-Link connection
- Signal strength and trouble display
- Remote activating and programming through Connect 24®
- Quad-Band: 850 MHz, 1900 MHz, 900 MHz and 1800 MHz
- Compatible with Alexor Wireless Panel
- Compatible with Sur-Gard® System I/II/III monitoring station receivers
- UL standard & encrypted line security

Approval Listings: FCC/IC, PTCRB, UL/ULC, NIST (AES Encryption Validation)

Internet and GSM/GPRS Dual-path Alarm Communicator TL265GS

- Fully redundant Internet and GSM/GPRS dual-path alarm communication
- Integrated call routing
- Panel remote uploading/downloading support via GSM/GPRS and Internet
- Supervision heartbeats via GSM/GPRS and Internet
- 128-bit AES encryption via GSM/GPRS and Internet
- Full event reporting
- SIA format
- SIM Card (included)
- PC-Link connection
- Signal strength and trouble display
- Remote activating and programming through Connect 24®
- Quad-Band: 850 MHz, 1900 MHz, 900 MHz and 1800 MHz
- Compatible with Alexor Wireless Panel
- Compatible with Sur-Gard® System I/II/III monitoring station receivers
- UL standard & encrypted line security

Approval Listings: FCC/IC, PTCRB, UL/ULC, NIST (AES Encryption Validation)

GSM/GPRS Wireless Alarm Communicator GS2060

- Back up and primary GSM/GPRS alarm communication
- Panel remote uploading/downloading support via GSM/GPRS
- Supervision heartbeats via GSM/GPRS
- 128-bit AES encryption via GSM/GPRS
- Full event reporting
- SIA format
- SIM Card (included)
- PC-Link connection
- Signal strength and trouble display
- Remote activating and programming through Connect 24®
- Quad-Band: 850 MHz, 1900 MHz, 900 MHz and 1800 MHz
- Compatible with PC1864/1832/1616 control panels (version 4.1 and higher)
- Compatible with Sur-Gard® System I/II/III monitoring station receivers
- UL standard & encrypted line security
- ULC passive or active line security levels

Approval Listings: FCC/IC, PTCRB, UL/ULC, NIST (AES Encryption Validation)

Internet and GSM/GPRS Dual-path Alarm Communicator TL260GS

- Fully redundant Internet and GSM/GPRS dual-path alarm communication
- Integrated call routing
- Panel remote uploading/downloading support via GSM/GPRS and Internet
- Supervision heartbeats via GSM/GPRS and Internet
- 128-bit AES encryption via GSM/GPRS and Internet
- Full event reporting
- SIA format
- SIM Card (included)
- PC-Link connection
- Signal strength and trouble display
- Remote activating and programming through Connect 24®
- Quad-Band: 850 MHz, 1900 MHz, 900 MHz and 1800 MHz
- Compatible with PC1864/1832/1616 control panels (version 4.1 and higher)
- Compatible with Sur-Gard® System I/II/III monitoring station receivers
- UL standard & encrypted line security
- ULC passive or active line security levels

Approval Listings: FCC/IC, PTCRB, UL/ULC, NIST (AES Encryption Validation)





GSM/GPRS Universal Wireless Commercial Fire Alarm Communicator

GS3055-ICF *(Only available in the U.S.A.)*

- Compatible with control panels that communicate using the Contact ID format
- Full event reporting
- Uses GPRS data channel for high-speed, reliable and low-cost communications to an IP receiver
- 4 on-board inputs
- 4 on-board outputs (open collector)
- SIM card (included)
- Activation and initialization via automated telephone activation system (VRU) or web-user interface provided by CONNECT 24®
- Compatible with Sur-Gard® System I/II/III monitoring station receivers
- Includes UL listed power supply, transformer and 7 Ah rechargeable battery
- UL 864 8th Edition

Approval Listings: FCC, UL, CSFM



GSM/GPRS Universal Wireless Alarm Communicator GS3060

- Compatible with control panels that communicate using the Contact ID format
- Full event reporting
- Uses GPRS data channel for high-speed, reliable and low-cost communications to Sur-Gard® System I, System II, and System III receivers
- 4 on-board inputs
- 4 on-board outputs (open collector)
- SIM card (included)
- Activation and initialization via automated telephone activation system (VRU) or web-user interface provided by CONNECT 24®
- Monitors the panel's attempts to communicate to determine if GSM backup communications are necessary
- ULC passive line security levels P₁ - P₃ (use in conjunction with compatible ULC dialer)

Approval Listings: FCC/IC, UL/ULC



Transformer for GS3055 and GS3060 ADP1310-NA

- Inputs: 100- 240 Vac, 50/60Hz
- Outputs: 13.8 Vdc, 1 Amp
- Dimension: 4" (H) x 2.375" (W) x 2" (D)
- North America plug

Approval Listings: UL/CUL Energy Efficiency Level IV approvals

Note: Not used for installations that require standby supply (battery backup)



CONNECT 24®

Since 1998, CONNECT 24 has been activating and administering cellular and GSM services for security alarm signals to dealers in the U.S. and Canada. All DSC GSM Communicators (TL-260GS, TL265GS, GS-2060, GS2065, GS3055-ICF, and GS3060) are activated and programmed via Connect 24's Web site or through Connect 24's VRU (Voice Response Unit).

Please visit www.connect24.com or contact Connect 24 directly at **1-888-251-7458 (US)** or **1-888-955-5583 (Canada)** for more information.

T-Link Universal IP Alarm Communicator TL300

- Compatible with most control panels that use the Contact ID format
- Instant, always-on IP communication
- Works over local LAN/WAN network or the Internet
- 128-bit AES encryption (NIST approved)
- Supports DHCP (dynamic IP addresses)
- Low network bandwidth requirements
- Compatible with 10/100BaseT networks
- Reports events to 2 different receiver IP addresses
- Polling and hardware substitution protection
- 4 on-board programmable zone inputs and 2 programmable voltage outputs as stand-alone module
- Programmable through the PK5500 LCD keypad or T-Link Console software
- Software upgrades via network
- Compatible with Sur-Gard® System I/II/III monitoring station receivers
- UL standard & encrypted line security
- ULC active line security levels A₁ - A₄

Approval Listings: FCC/IC, UL/ULC, CSFM



T-Link Internet/Intranet Alarm Communicator TL250

- Supports PowerSeries (version 3.24 and higher) and MAXSYS (version 3.31 and higher) control panels
- Instant, always-on IP communication
- Works over local LAN/WAN network or the Internet
- 128-bit AES encryption (NIST approved)
- Supports DHCP (dynamic IP addresses)
- Low network bandwidth requirements
- Compatible with 10/100BaseT networks
- Reports events to 2 different receiver IP addresses
- Polling and hardware substitution protection
- 4 on-board programmable inputs and 2 programmable voltage outputs as stand-alone module
- Programmable through the system keypad, PK5500 LCD keypad or T-Link Console software
- Software upgrades via network
- Download control panel via Internet with DLS software
- Compatible with Sur-Gard® System I/II/III monitoring station receivers
- UL standard & encrypted line security
- ULC active line security levels A₁ - A₄

Approval Listings: FCC/IC, UL/ULC, CSFM



T-Link DVACS* Internet/Intranet Alarm Communicator TL250D

(Canada Only)

- Supports the same DVAC account database and automation system at central stations
- Transmits DVACS generated events by converting the DVACS protocol to IP
- 90-second supervision (same as traditional DVACS)
- 128-bit AES encryption
- Compatible with 10/100BaseT networks
- Software upgrades via network
- Compatible with Sur-Gard® System I/II/III monitoring station receivers
- ULC active line security levels A₁ - A₄

*DVACS is a registered trademark of Electro Arts. Ltd Scarborough, Ontario

Approval Listings: FCC/IC, ULC



T-Link Residential IP Alarm Communicator TL150

- Supports PowerSeries (version 3.24 and higher) control panels
- Instant, always-on IP communication
- Works over local LAN/WAN network or the Internet
- 128-bit AES encryption
- Supports DHCP (dynamic IP addresses)
- Low network bandwidth usage
- Compatible with 10/100BaseT networks
- Supervised as a KEYBUS module (supervision of both KEYBUS and network connections)
- T-Link programming (IP address and account number) through a web-browser interface
- Homeowners can arm/disarm security system and view zone status through a webpage on their home computer
- Compatible with Sur-Gard® System I/II/III monitoring station receivers

Approval Listings: FCC/IC





Sur-Gard Monitoring Station Receivers & Line Card Modules

Dual Phone Line With Optional IP Receiver SG-SYSTEM I

- Multi-format receiver
- Integrated scheduled receiver line card testing
- Up to 63 different profiles and up to eight different handshakes per profile
- 500-event memory buffer on each individual line card
- Patented ANI and DNIS reception, Automatic Handshake Selection (AHS), Caller ID capability and virtual configurations
- Continuous verification of computer/receiver links
- One parallel, one serial, one USB, one TCP/IP printer port available
- One serial, one TCP/IP activation port available
- One USB, one TCP/IP console port available
- Non-volatile RAM for programming and event buffer
- "Flash" download software upgrades
- DSP technology
- Remote acknowledgement and sounder capability
- Optional support for 512 IP Communicators
- Rack mount in standard 19-inch rack with the SG-SII-RMK
- 128 Bit AES encryption over IP
- UL listed
- ULC active line security levels A₁ - A₄



NEW

Approval Listings: FCC/IC, UL/ULC, CSFM, NIST (AES Encryption Validation)

Single-Line IP Receiver SG-SYSTEM II

- Value-priced remote monitoring solution ideal for lower-volume applications
- Supports up to 512 supervised and up to 1,536 IP communicator accounts (TL150, TL250, TL300, TL260GS, TL265GS, GS3055ICF, GS3060, GS2060, GS2065)
- Desktop or rack mountable with the use of a rack kit
- TCP/IP, USB, serial outputs to automation software
- 128-bit AES encryption
- Works over local LAN/WAN network as well as the Internet
- Polling and hardware substitution protection
- Compatible with 10/100BaseT networks
- Fully programmable via SG-Systems Console software
- Menu-driven, 40-character, 2-line LCD display with blue backlighting provides instruction when in manual mode
- 4 buttons for manual programming and acknowledgement of alarm signals when in manual mode
- Universal power supply compatible with 110/220 50 Hz/60 Hz
- Onboard flash memory and DSP for future software upgrades and enhancements



Approval Listings: FCC/IC, UL/ULC, CSFM, NIST (AES Encryption Validation)



Sur-Gard Monitoring Station Receivers & Line Card Modules

Virtual Receiver SG-SYSTEM III

- Up to 24 line cards per System III receiver SG-DRL3IP or SG-DRL3 STD
- Fully “hot-swappable” modules
- Fully programmable via SG-System III Console software
- Eliminates fixed-line hunt groups
- Integrated scheduled receiver line card testing
- Blocks unwanted communications
- Requires less physical space
- Upgradeable flash memory
- Automation output over TCP/IP or RS-232

Approval Listings: FCC/IC, UL/ULC, CSFM, NIST (AES Encryption Validation), FM



POTS Line Card For SYSTEM III SG-DRL3STD

- Maximizes use of all line cards (SG-DRL3STD)
- Patented ANI and DNIS reception
- Patented Caller ID
- Patented Automatic Handshake Selection (AHS)
- Reduces phone charges
- Advanced 2-way audio integration



Network Line Card For SYSTEM III SG-DRL3-IP

- Each line card supports up to 512 supervised and up to 1,536 total
- IP communicator accounts (TL150, TL250, TL300, TL260GS, TL265GS, GS3055ICF, GS3060, GS2060, GS2065)
- Instant, always-on IP communication
- Works over local LAN/WAN network as well as the Internet
- 128-bit AES encryption
- Polling and hardware substitution protection
- Compatible with 10/100BaseT networks
- High-security network monitoring
- UL standard & encrypted line security
- ULC active line security levels A₁ - A₄





DSC Services & Support

DSC understands that security dealers everywhere need more than just great products, they deserve exceptional service and support as well. That is why we have committed resources to ensure we're in a position to help our customers as needed.

DSC Customer Help Center

A dedicated team of Technical Support and Inside Sales Representatives stands ready to provide security dealers with valuable expertise and in-depth product knowledge. The Customer Help Center offers extended hours of services, access to all departments within DSC, and multilingual support in 3 languages. The Customer Help Center is ready to provide you with the exceptional service, support and value you have come to expect from DSC.

For technical support, call 1-800-387-3630 or e-mail us tech@dsc.com. For general product information or the location of the nearest DSC distributor, please call 1-888-888-7838 or e-mail us at info@dsc.com.

DSC Marketplace.com

The DSC Marketplace.com is intended to be your primary method for ordering product-specific literature, associated marketing support materials and promotional items. To gain access to this great service, please visit www.dscmarketplace.com and complete the short registration form. Upon completion, your account will be activated within 48 hours allowing you to start browsing the site at your convenience. To ensure proper materials are being ordered, you can view thumbnail pictures as well as download PDF files of all items. For more information or comments, please visit www.dscmarketplace.com.

www.dsc.com

The DSC website is an intuitive, easy-to-navigate resource that provides security professionals with access to a wealth of product-specific information. Password-protected areas are tailored specifically for security dealers and offer the latest news on DSC products, corresponding events and launches, the latest technical support materials and diagnostic tools, and helpful industry and association links.

Visit www.dsc.com to learn more.

Downloadable PDF versions of all DSC security products, sales and specification sheets, end-user manuals, architect and engineer specifications, plus the complete DSC product catalog can be found on the website.





YOUR MOST VALUABLE TOOL MAY BE ON THE WEB

The new DSC.com website



The all new DSC.com website has been rebuilt from the foundation up with special attention focused toward intuitive navigation, faster download speed and greater access to technical resources.

Now with a more robust technical library, you can quickly and easily find user and installer manuals, software, product descriptions, photography, application notes, solutions and certifications.

DSC.com, your complete online resource for DSC product information.

LAUNCHING APRIL 2009



DSC[®]

For more information on the products featured here
or on any other DSC products please call:

1-888-888-7838
(Toll-free in United States & Canada)

E-mail: info@dsc.com
or contact your DSC Account Representative.
Please visit us at www.dsc.com